

HBCU FOR LIFE

College Resource Guide

PRESENTED BY ALPHA KAPPA ALPHA SORORITY INC
MU KAPPA OMEGA CHAPTER



Table of Contents

History of Historically Black Colleges and Universities	2
Helpful Tips for College Admissions	3
Personal Statement	4
Resume Basics	6
SAT/ACT Testing	7
FAFSA.....	9
Scholarships	11
Additional Financial Tips	12
Common Black College Application.....	13
Clubs, SGA, Greek Life	15
College Safety Tips.....	17
HBCUs in the South Central Region	18
HBCUs across the Country.....	28
Helpful College Links.....	32
HBCU for Life Resource Guide Subcommittee	33



HBCU History

Historically Black Colleges and Universities (HBCUs) were created with the help of the Morrill Land-Grant Act of 1890 to educate freed slaves after the Civil War. Cheyney University was the first HBCU founded in 1837 in Pennsylvania. Historically black colleges and universities were the FIRST schools to provide an opportunity for African Americans to obtain higher education.

Notable HBCU graduates include W.E.B Du Bois, Toni Morrison, Langston Hughes, Thurgood Marshall, Dr. Martin Luther King, Jr. , Katherine Johnson, Oprah Winfrey, Kamala Harris, and Michael Strahan. There are more than 100 HBCUs across the country, including public and private institutions that offer doctoral, master's, bachelor's and associate's degree programs.

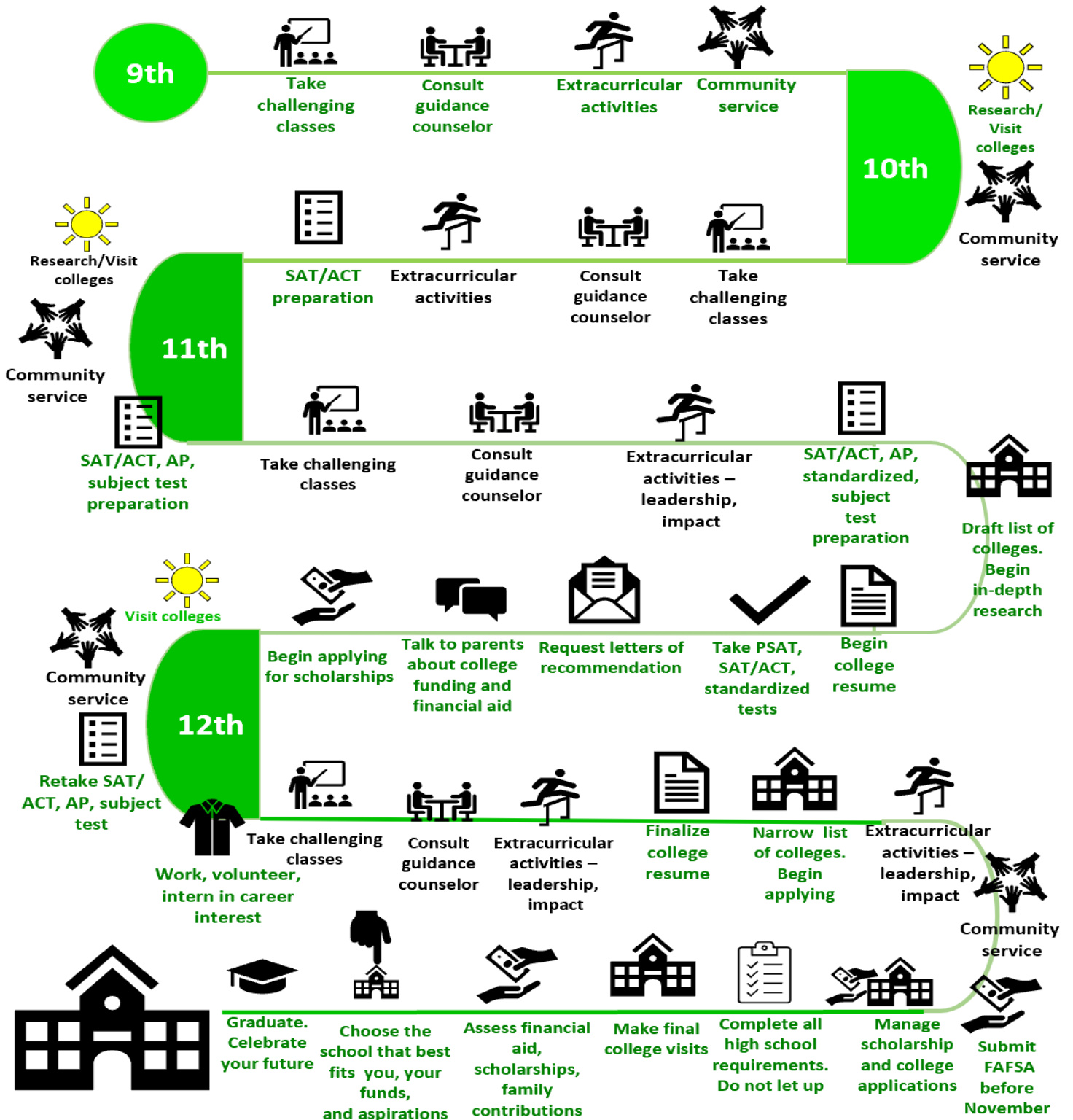
Historically Black Colleges and Universities have played a major role in the growth and education of our ancestors and continue to play a major role in our community. Even to this day, due to the lower cost of attending HBCUs and their flexibility, HBCUs continue to meet the needs of low income and first generation students regardless of ethnicity.

HBCUs are also important because of the nurturing and supporting environment that they provide. It has been researched and proven that students of color feel more at home, and perform better in schools where they feel supported and safe.



Helpful Tips for College Admissions

Check out this is timeline of milestones of action to ensure that students are informed and stay on track in seeking acceptance into a college or university.





Personal Statement

What is a personal statement?

A personal statement supports your application for university or college admission. This your opportunity to explain to the university or college admission office why you are an excellent candidate. It's also a chance for you to articulate why you would like to study a particular major, and what skills and experience you possess that show your passion for your chosen field.

Choosing a Topic for your Personal Statement

In most cases, you are given prompts to choose from. Common personal statement prompts include:

- Central aspect of your identity (activity, interest, talent, background)
- Overcoming a failure
- Time you rose to a challenge or showed leadership
- Experience that changed your beliefs
- Problem you would like to solve
- Subject or idea that captivates you

Quick Tips for Writing a Personal Statement for College:

1. Think about what makes you the best candidate – this could be relevant experience, skills, or achievements you have gained from education, work, or other activities.
2. Approach this as a creative writing assignment and to share a meaningful story. Choose a topic that inspires you so that you will enjoy writing your essay.
3. If you are submitting a personal statement for a common application portal for several universities, avoid using specific school names.
4. Your essay isn't a play-by-play of everything that happened in that time frame. Only include relevant details that enrich the story. Remember that the goal is to share your voice, what's important to you, and who you are.
5. If there are any personal circumstances which have affected your educational performance, outline them in your personal statement. For example, this might be something that caused you to miss school - such as a physical or mental health condition, or caring for a family member **or** if you have suffered financial or personal hardship that you would like the admissions office to be aware of, you can let them know in your letter.
6. Try to avoid overdone quotes from famous people. Adding these famous quotes won't make your essay unique, and it takes up valuable space for you to share your voice.
7. Mention any relevant employment experience or volunteering you've done.
8. Try not to write about too many events or experiences. Focus on one specific experience or a few related experiences, and go into detail on those.



Personal Statement

Do's	Don'ts
<p>Tell a story</p> <p>To keep admission officers interested, tell a story about yourself, rather than write a traditional five-paragraph essay.</p> <p>Obey the rules of grammar</p> <p>It's okay to use a more personal style of writing, but admission officers want to know you can write well – check your spelling and avoid grammatical errors.</p> <p>Personalize your statement</p> <p>If appropriate, reference the school you're applying to in your personal statement.</p> <p>Brag about yourself</p> <p>It's okay to write about your strengths and accomplishments!</p> <p>Respect word limits</p> <p>Admission officers have several applications to read through – keep your personal statement within the word limit.</p> <p>Get Feedback</p> <p>Have a few people look over your personal statement for you before you submit it. They can help catch typos and assess its strengths and weaknesses.</p>	<p>Restate your resume</p> <p>Don't use your personal statement to repeat information admissions officers can find in other parts of your application.</p> <p>Forget to show some self-awareness</p> <p>Show admission officers that you're self-aware by avoiding topics that make you look spoiled or insensitive.</p> <p>Have someone else write your personal statement for you</p> <p>Admission officers will recognize a personal statement written by someone other than yourself.</p> <p>Wait until the last minute to write it</p> <p>Writing a personal statement is more difficult than one may expect. It takes time to reflect and write about past experiences while remaining mindful of a word count.</p> <p>Write about sensitive topics</p> <p>Don't write about anything that may make the reader feel awkward or uncomfortable – your personal statement should be positive and uplifting.</p>



Resume Basics

The resume is very important to the college application because it summarizes the student's achievements, talents and interests. A college admissions resume should focus on academics and high school activities rather than past work experience. It is a wonderful way to showcase what the student can contribute to their college and/or university campus of choice.

John C. Student

1234 Ivy Street
Missouri City, Texas 77489
(281) 555-555
Email@gmail.com
Date Of Birth: 01/01/2002

Objective:

Education:

School Name:
School Address:

Date of Attendance:

GPA:

Test Scores:

School Phone Number:
CEEB School Code:

Senior Schedule:

<i>First Semester</i>	<i>Second Semester</i>
-----------------------	------------------------

Community Service:

Name of Agency where service was provided:
Volunteer Time:
Total Hours:
Description of Service:

Leadership Activities:

List Leadership Activity:
Dates of Service:
Office/Position:
Description of Activity:
Time Served: Hours/Weeks

Athletics:

List Athletics:
Provide Coaches Contacted:
Position:

Awards and Honors:

Summer Enrichment:

Work Experience:



SAT/ACT

The SAT and ACT are entrance exams commonly used by most colleges and universities to make admissions decisions. They are multiple-choice, pencil-and-paper tests. The purpose of these exams is to measure a high school student's readiness for college, and provide colleges with one common data point that can be used to compare all applicants. College admissions officers will review standardized test scores along with a student's high school GPA, the courses taken in high school, letters of recommendation from teachers or mentors, extracurricular activities, admissions interviews, and personal essays. The scores' importance differs from university to university. However, higher scores provide students with more options for attending and paying for college.

When should I take the SAT or ACT? Most students take the SAT, the ACT, or both during the spring of their junior year or the fall of their senior year. It is important to leave time to re-take the test if you need to raise your score before applying to college.

How is the SAT scored? Each section is scored on a 200 to 800 point scale. The total SAT score is the sum of the section scores. The highest possible SAT score is 1600. If the test with the Essay is taken, a separate score will be provided for that section.

How is the ACT scored? Each section is scored on a 1 to 36 point scale. A composite ACT score is the average of the four section scores, also on a scale from 1 to 36. If the ACT with Writing Test is taken, a separate score is provided for that section.

Which exam should I take? Most colleges and universities accept the scores from either exam, and many students take both. The content and style of these exams are similar, so it is a personal choice on which exam to take (unless of course your school of choice only accepts a particular test).

What is the cost for the exams? The SAT is \$46 or \$60, if taking with the essay, and the ACT is \$50.50 or \$67, if taking the writing section (additional fees may apply). Keep in mind that both exams offer fee waivers to students who qualify. Please check with your school's counseling office for more information.

Important web links: More information including how to register, testing tips, and additional resources can be found at <https://www.collegeboard.org/> & <https://www.act.org/>



SAT/ACT

SAT Length	3 hours (plus 50 minutes if taking optional Essay)
<u>SAT Sections</u>	<ul style="list-style-type: none">• Math• Evidence-Based Reading and Writing• Essay (optional)
SAT Cost	\$52 (\$68 if taking SAT with Essay)
Highest SAT Score	1600
Average SAT Score	1060

ACT Length	2 hours, 55 minutes (plus 40 minutes if taking ACT with writing component)
<u>ACT Sections</u>	<ul style="list-style-type: none">• English• Math• Reading• Science• Writing (optional)
Cost	US without Writing: \$50.50 USD US with Writing: \$67.00 USD Non-US without Writing: \$150.00 USD Non-US with Writing: \$166.50 USD
Max. Score	36
Avg. Score	21

SAT Dates for Testing: <https://collegereadiness.collegeboard.org>

ACT Dates for Testing: www.act.org



FAFSA

FAFSA

What is the FAFSA? It stands for: Free Application for Federal Student Aid. It is the form that students complete to receive financial aid from the federal government to assist with the cost of college. Every year millions of students receive grants (free money), work-study, and low-interest loans from the U.S. Department of Education. Colleges also use the FAFSA to determine which students get financial aid—and how much they will receive. The FAFSA asks for information about you and your family’s finances, including tax returns, so you will need your parents’ help to complete it.

FAFSA Facts

- Submitting the FAFSA is the most important thing you can do if you want financial aid.
- The FAFSA is free—you do not need to pay anyone to prepare it for you.
- You need to submit a new FAFSA before each academic year in which you want to get aid. If you plan to apply for aid throughout college, you will need to fill out the FAFSA each year.
- Be sure to use a permanent email address on the form, not your high school email address, so you can use your FAFSA account throughout college.

Who Should Fill Out the FAFSA?

- Your family does not have to have a low income to qualify for assistance. Even if your family makes \$200,000 a year, you could be eligible for aid.
- You automatically qualify for a low-interest federal loan when you submit a FAFSA. These loans are less expensive to pay back than many private student loans.
- Many work-study programs require the FAFSA.
- Some merit-based scholarships require the FAFSA to help them determine scholarship amounts.

How to Fill Out the FAFSA

- Online at ed.gov.
- By printing and filling out a FAFSA form, then mailing it to the address on the form.

When to Submit Your FAFSA: Understanding FAFSA Deadlines

You can file as early as October 1 for the following academic year. It is a good idea to submit the application as soon as possible because financial aid is often given out on a first-come, first-served basis.

There are three types of FAFSA deadlines:

- College deadlines: Important when you are applying for aid from a college. Deadlines vary by school, so check college websites or contact the financial aid offices of the colleges you are interested in to find out when you need to submit your FAFSA.
- State deadlines: Important when you are applying for aid from your state. Check your state's FAFSA deadline.
- Federal deadline: June 30 is the last day you can apply for federal aid for the following academic year.



FAFSA

10 COMMON FAFSA® MISTAKES

Don't lose your turn—collect money for school!

- NOT COMPLETING THE FAFSA FORM**
If you don't complete the FAFSA form, you could lose out on thousands of dollars to help you pay for college.
- NOT FILLING OUT THE FAFSA FORM AS SOON AS IT'S AVAILABLE**
If you want to get the most financial aid, fill out the FAFSA form as close to October 1 as possible.
- NOT SUBMITTING THE FAFSA FORM BY THE DEADLINE**
Each state and school sets its own deadline, so fill it out ASAP.
- NOT GETTING AN FSA ID BEFORE FILLING OUT THE FAFSA FORM**
You may need to wait up to three days before you can use your FSA ID to sign your FAFSA form electronically.
- NOT USING YOUR FSA ID TO START THE FAFSA FORM**
Using your FSA ID populates your personal information automatically, which could prevent errors.
- NOT USING THE IRS DATA RETRIEVAL TOOL (IRS DRT)**
Thanks to a partnership with the IRS, students and parents can automatically transfer their tax info to their FAFSA form.
- INPUTTING INCORRECT INFORMATION**
Triple check your answers so you don't accidentally hold up the process.
- NOT REPORTING REQUIRED INFORMATION**
Be sure you're reporting the correct parent and financial information.
- LISTING ONLY ONE COLLEGE**
Add ALL the colleges you're considering to your FAFSA form, even if you aren't sure whether you'll apply or be accepted.
- NOT SIGNING THE FAFSA FORM**
So many students answer every single question that is asked, but fail to actually sign the FAFSA form with their FSA ID. Don't be one of them!

<https://www.collegefinancinggroup.com/tag/fafsa/>

SIMPLE STEPS TO TRANSFER TAX INFORMATION INTO YOUR FAFSA® FORM

The IRS Data Retrieval Tool (IRS DRT) Electronically Transfers Your Federal Tax Return Information Into Your FAFSA® Form

EASY Transfer info with the click of a button.

FAST Instantly retrieve your information.

ACCURATE Correctly fill in your information.

HOW

- 1 Log in to your current FAFSA form or start a new application at fafsa.gov.
- 2 In the finances section of the online form, you will see a "Link to IRS" button if you are eligible to use the IRS DRT.
- 3 Click the "Link to IRS" button and log in with your FSA ID to be transferred to the IRS to retrieve your info.
- 4 Once at the IRS site, enter your information exactly as it appears on your federal income tax return and click the "Submit" button.
- 5 Check the "Transfer My Tax Information into the FAFSA form" box, and click the "Transfer Now" button.*
- 6 You will know that your federal tax return information has been successfully transferred because the words "Transferred from the IRS" will display in place of the IRS information in your FAFSA form.

SUBMIT YOUR FAFSA® FORM
(Free Application for Federal Student Aid)

*For your protection, your tax information will not be displayed on either the IRS site or fafsa.gov.

The IRS DRT can be used by both students and parents.

Federal Student Aid
AN OFFICE OF THE U.S. DEPARTMENT OF EDUCATION

PROUD SPONSOR OF
THE AMERICAN MIND™

To learn more about the IRS DRT, visit StudentAid.gov/irsdt

<https://studentaid.gov/apply-for-aid/fafsa/filling-out>



Scholarships

Free Money, Free Money, Free Money

When searching for your college of choice and preparing for the cost of attending college, scholarships should be one of the main items to research, along with your college search, because they can save you and your family tons of money and reduce your out of pocket expenses. You want to receive as much free money as possible and use student loans as a last resort if possible.

Scholarship Tips

1. Start early-If you are looking for a scholarship from the college of your choice, most institutions send institutional scholarship offers in the fall prior to the fall of the next school year. Colleges want to make sure the student receives and considers their institution's offer before considering an offer from a competing institution. The deadlines for submission of most institutional scholarship applications are usually in early to middle fall term. Institutions compete for the best students, so be academically prepared.
2. Prepare your essay(s)-Start early on writing your best essay to submit your applications as soon as the applications become available. You can research some examples of essays to assist you in writing your essay by visiting sites such as <https://www.collegeessayguy.com/blog/college-essay-examples> or search for what colleges are currently looking for in essays by visiting sites such as <https://professionals.collegeboard.org/guidance/applications/essay>
3. Apply for all institutional scholarships you may find that you are qualified for-The more scholarships you apply for, the more chances you have of being offered a scholarship. Institutions may have various types of scholarships that they offer. Search the school of your choice for the financial aid and scholarship website for available University scholarships, and apply for those that interest you.
4. Apply for outside scholarships. Outside scholarships are sometimes referred to as 3rd party scholarships which are given by donors of private corporations, entities or organizations. Apply prior to attending college and throughout your matriculation. You may find some helpful tips with outside scholarships at <https://money.com/collection-post/tips-winning-college-scholarships/>. Below are also links to some examples of outside or 3rd party scholarship donors and scholarships to apply for:
 - UNCF- <https://uncf.org/scholarships>
 - NAACP- <https://www.naACP.org/naACP-scholarships/>
 - Thurgood Marshall College Fund- <https://www.tmcF.org/students-alumni/scholarships/>
 - The Gates Scholarship - <https://www.thegatesscholarship.org/scholarship>
 - AKA Educational Advancement Foundation- <https://akaeaf.org/scholarships>
 - The Tom Joyner Foundation - <https://tomjoynerfoundation.org/scholarships-list/>
 - Julia F. Thompson, Inc.- <https://jftcharities.org/scholarships/>
 - Scholarships.com - <https://www.scholarships.com/financial-aid/college-scholarships/scholarships-by-type/minority-scholarships/>
 - Sallie Mae - <https://www.salliemae.com/college-planning/tools/scholarship-search/?Inkid=SM-AfricanAmerican-find-scholarships>
 - Niche - <https://www.niche.com/colleges/scholarships/>



Additional Financial Tips

Types of Financial Aid

Grants- Grants are forms of financial aid that are typically based on need. A grant is typically “free” aid that students do not have to pay back. See more information about types of grants at <https://studentaid.gov/understand-aid/types/grants>

Work Study- Work study can assist you in earning money to help pay for college as you learn by working on or off campus. This can also be a head start in your future profession by working in an office or area pertaining to your major field of study. See more information regarding work study at <https://studentaid.gov/understand-aid/types/work-study>

Student Loans- Student loans are interest-bearing loans for college, trade or career school that you borrow. These loans must be paid back with accruing interest. Some loans are interest deferred loans and some are loans that you pay interest on while you are still earning your degree. See more information on the Federal Department of Education loan program at <https://studentaid.gov/understand-aid/types/loans>

Other Tips for finances and cost of attending college

Prepare a financial budget and know what your cost of tuition & fees will be each semester before you arrive on campus so there will be no surprises. Do your homework and have this information before you arrive on the campus. If you are expecting financial aid, check on it and make sure you have done all things on the checklist to make sure it is received timely to pay your tuition & fees. Check your student e-mail account daily because this is how most schools communicate with you regarding your status. Do not rely on your parents to do this for you. You are now (or will be) an adult and must take responsibility for your success during your college career.



Common Black College Application

What is the Common Black College Application?

The Common Black College Application (CBCA) is an online application that allows students to submit their college application to 56 HBCU's at one time for a total fee of \$20. You will save time by being able to complete information and essays that you can submit to multiple universities. However, bear in mind that approximately two-thirds of universities ask for supplemental information and/or essays. You can access the Common Black College Application online at: <https://commonblackcollegeapp.com/>. Here you can see all the universities that accept the Common Black College Application and all their deadlines.

To submit an application to the Common Black College Application, you must first register. To register, click on APPLY NOW on any of the webpages of the Common Black College Application website to begin the application process. You have to register first to create an account. Once you have created an account, you may log-in anytime to track the progress of your application including seeing what Member Institutions have downloaded, printed or viewed your application. Although you do not have to complete another application or pay another application fee, some of the Member Institutions will only process your application if you select them as one of the top four choices. Therefore, it is encouraged to contact them via our direct messaging, by phone, email or letter to let them know you are interested in attending their school. The CBCA does not offer scholarships. Their sole purpose is to create a space for students to have their application, test scores and transcripts made available to all of their 56 Member Institutions. Email inquiries to contact@commonblackcollegeapp.com or (770)716-0616.

Some HBCU's do not use the Common Black College Application. The list of Non-CBCA HBCU's are listed below with a link to apply directly to the Non-CBCA institution by clicking on the name of the institution:



Common Black College Application

[Albany State University](#)
[Allen University](#)
[American Baptist College](#)
[Barber-Scotia College**](#)
[Birmingham-Easonian Baptist Bible College*](#)
[Bishop State Community College](#)
[Bowie State University](#)
[Carver College *](#)
[Cheyney University of Pennsylvania](#)
[Clinton College](#)
[Coahoma Community College](#)
[Coppin State University](#)
[Delaware State University](#)
[Denmark Technical College](#)
[University of the District of Columbia](#)

[Fayetteville State University](#)
[Fisk University](#)
[Florida A&M University](#)
[Gadsden State Community College \(Valley St\)](#)
[Hampton University](#)
[Hinds Community College at Utica](#)
[Hood Theological *](#)
[Howard University](#)
[Interdenominational Theological Center](#)
[J. F. Drake State Technical College](#)
[Jarvis Christian College](#)
[Johnson C Smith Theological Seminary *](#)

Not recognized by US Department of Education as an HBCU

** Not currently accredited **

[Knoxville College **](#)
[Langston University](#)
[Lawson State Community College](#)

[Lincoln University \(PA\)](#)
[Meharry Medical College](#)
[Miles School of Law *](#)
[Morehouse College](#)
[Morehouse School of Medicine](#)
[Morris Brown College **](#)
[North Carolina A&T State University](#)
[North Carolina Central University](#)
[Oakwood University](#)
[Payne Theological *](#)
[Prairie View A&M University](#)
[Savannah State University](#)
[Selma University](#)
[Shelton State Community College- C A Fredd Campus](#)
[Shorter College Simmons College of Kentucky](#)
[Southern University at Shreveport](#)
[Southwestern Christian College](#)
[Spelman College](#)
[St. Philip's College](#)
[Texas College](#)
[Texas Southern University](#)
[H. Councill Trenholm State Community College](#)
[Virginia University of Lynchburg](#)
[Winston-Salem State University](#)
[Xavier University of Louisiana](#)

HBCU Full Listing of 100+ Colleges & Universities
<http://thehundred-seven.org/hbculist.html>



Clubs, SGA, Greek Life

Attending college is an exciting time! It is an opportunity for you as a young adult to tap into your interests. There are many opportunities for you to explore while on campus through organizational involvement. Many campuses have more than 100 organizations and clubs that enhance a diverse environment. Clubs and organizations range in a variety of categories such as professional, social, multi-cultural, political, religious, and community service organizations. In this section, we will take you through creating a memorable campus experience.

Clubs

On campus clubs come in a variety of topics and can range from community service and social justice, academics, political, media/publication, religious, and sports and recreation. Also, an interest area for clubs, may center around your major. Declaring a major is an important step in your college experience. Whether you are majoring in Theatre, Nutrition, Accounting, Biology, Engineering, Fashion Merchandising or even Education there is a place for you. For any major you choose there is a club to sign up for. Participating in a club on campus gives you the opportunity to work in groups to plan a particular campus event, and it also gives you the opportunity to make new friends. It is important to note that some clubs have local and national affiliations.

Some clubs that you might see on campus might include, but are not limited to, the following:

- African Student Association
- Association of Texas Professional Educators
- Alliance of Black School Educators
- American Marketing Association
- Baptist Student Ministry
- Biology Club
- Film & Television Club
- Health Occupations Student of America
- Pre-Nursing Association
- Pre-Law Society
- Residence Life
- Sign Language Club
- Student Chapter of National Society of Black Engineers
- Student Activities Council
- National Association of Social Workers



Clubs, SGA, Greek Life

SGA

The Student Government Association is one of the heart beats of your college/university. The SGA is considered the highest ranking organization on campus that is created to speak on behalf of the student body in an effort to increase student engagement, school spirit and transparency. The SGA is separated into elected positions such as the President, Vice-President, Comptroller, Executive Secretary, Student Senator, Student Defender, Editor, Senate Chair, Senate Pro-Tempore and Members. Each member of the Student Government Association cabinet works cohesively to contribute to the mission and vision of the university. As a student of the university, participation in SGA is crucial so that you are kept abreast of the happenings on campus. The SGA is an opportunity for you to be involved with change and it is up to you as a student to join SGA and be a part of the change.

Greek Life

The National Pan-Hellenic Council and the Independent Greek Council play an important role in college life. They individually commit to the campus life experience and community service by creating opportunities for students, faculty and staff to participate in. Although membership is selective, participating in service events helps you as a student to stay involved on another level. Greek Life, for many years has lent its name to create service projects that are tailored around the health, education and political arenas. So whether you are helping students sign up to vote, volunteering with your roommates in the morning for a campus clean up or feeding the homeless, show up, give back and stay active in the community.

Below, is a list of the National Pan-Hellenic Council (NPHC) and Independent Greek Council organizations.

NPHC

Alpha Phi Alpha Fraternity, Inc. | Alpha Kappa Alpha Sorority, Inc.
Delta Sigma Theta Sorority, Inc. | Iota Phi Theta Fraternity, Inc.
Kappa Alpha Psi Fraternity, Inc. | Omega Psi Phi Fraternity, Inc. | Phi Beta Sigma Fraternity, Inc.
Sigma Gamma Rho Sorority, Inc. | Zeta Phi Beta Sorority, Inc.

Independent Greek Council

Phi Mu Alpha | Kappa Kappa Psi | Tau Beta Sigma | Lambda Kappa Sigma
Kappa Psi | Sigma Omega Phi | Phi Delta Chi



Safety Tips: On and Off Campus

Though college will be some of the best years of a young adult's life. It is pertinent that college students are vigilant and aware of their surroundings both on and off campus. Below are a few tips to help stay safe:

On Campus Safety Tips

1. Carry your cell phone with you at all times. However, do not get so distracted by your phone that you are unaware of your surroundings.
2. Make sure that your roommate or trusted friend knows where you are, as well as your daily schedule.
3. Be aware of your social media presence, as well as your phone privacy settings. Your social media presence can inadvertently lead to unwanted attention. Make sure you're not posting your location, especially if you are alone. Also, make sure your location settings are not leading any unwanted company to you.
4. Avoid walking alone, especially at night; take a classmate or friend with you as you traverse across the campus.
5. Make sure to familiarize yourself with your campus as well as surrounding landmarks and streets.
6. Lastly, this may seem like a no brainer, but always keep your dorm room or on campus apartment doors locked. Also, make sure your car doors are locked as well and always remember to check surroundings when getting in and out of your car; and when leaving and entering your on campus home.

Off Campus Safety Tips

1. When driving, keep your doors locked and always park in well-lit areas
2. Do not traverse unfamiliar neighborhoods.
3. There is safety in numbers. Travel in groups whenever possible.
4. Trust your instincts. If a situation feels uncomfortable, it is ok to leave.
5. Carry your purse or handbag close to your body with a firm grip. Always put your wallet in your front pocket or inside jacket pocket, and never place the wallet in your back pocket.
6. If you are walking and feel that you are being followed, cross the street and head to the nearest well lit, heavily populated place, and call the police.
7. If you are being followed while driving, drive to the nearest police or fire station, the Main Gate, an open business, or another area where you can safely call the police. Write down the license number and description of the vehicle and secure a description of the driver. If there are no safe areas around, honk your horn repeatedly and turn on your emergency flashers.



HBCUs in the the South Central Region

A
R
K
A
N
S
A
S

Arkansas Baptist College

IT'S A GOOD THING!



- Founded in 1884
- Population: > 1100—all undergraduates
- Degrees offered: Associate's Bachelor's
- Academic divisions: Business Administration, Human Services, Criminal Justice, and Religious Studies

ADDRESS:

1621 Dr. Martin Luther King Drive
Little Rock, Arkansas 72202

WEBSITE:

www.arkansasbaptist.edu

4 year, Private

INTERESTING FACT:

Only Baptist HBCU west of the Mississippi River and was originally known as the Minister's Institute, founded by both black and white religious leaders

Shorter College

I THINK, THEREFORE I AM



- Founded in 1886
- Population: 400+
- Degrees offered:
- Associate of Arts in General Studies

ADDRESS:

604 N. Locust Street
North Little Rock, Arkansas 72114

WEBSITE:

www.shortercollege.edu

2 year, Private

INTERESTING FACT:

Only private, two-year
HBCU in the nation



HBCUs in the the South Central Region

**A
R
K
A
N
S
A
S**

Philander Smith College

THINK JUSTICE



- Founded in 1877
- Population: 1,000
- Degree offered: Bachelor's
- Academic divisions: Arts, Science, Business Administration, Social Work

ADDRESS:
900 West Daisy L. Gaston
Bates Drive
Little Rock, Arkansas 72202

WEBSITE:
www.philander.edu

Band
Panther Pride
Marching Band

INTERESTING FACT:

Only United Negro College Fund member institution in Arkansas

4 year, Private

Member of...

United Negro College Fund
National Association of Intercollegiate Athletics (NAIA)

University of Arkansas Pine Bluff

WHERE YOU'LL BE PROUD TO BE



- Founded in 1873
- Population: > 3000 (Graduate/ Undergraduate)
- Degrees offered: Associate's, Bachelor's Master's
- 8 academic divisions—including Business, Biology, and Criminal Justice & Safety Studies

ADDRESS:
1200 N. University Mail Slot 4789
Pine Bluff, Arkansas 71601

WEBSITE:
www.uapb.edu

INTERESTING FACT:
UAPB is a leading research institution in aquaculture studies

4 year, Public

Band
Musical Marching
Machine of the Mid
-South (M-4 Band)

Member of...

Thurgood Marshall
Scholarship Fund
Southwestern Athletic
Conference



HBCUs in the the South Central Region

L
O
U
I
S
I
A
N
A

<h2 style="margin: 0;">Dillard University</h2> <p style="margin: 0;"><i>STRONG THROUGH FAITH</i></p>		
<ul style="list-style-type: none"> Founded in 1930 Population: > 1900 Undergraduates Degrees offered: Bachelor's 6 academic divisions—Business, Educational & Psychological Studies, Humanities, Natural Science and Public Health, Nursing and Social Sciences 	<p>ADDRESS: 2601 Gentilly Blvd. New Orleans, Louisiana 70122</p> <p>WEBSITE: www.dillard.edu</p>	<h3 style="margin: 0;">Bleu Devils</h3>
<p>INTERESTING FACT:</p> <p>The only university in the United States that is a partner in the Melton Foundation</p>		<p>4 year, Private</p> <p>Member of...</p> <p>National Association of Intercollegiate Athletics (NAIA)</p>

<h2 style="margin: 0;">Grambling State University</h2> <p style="margin: 0;"><i>WHERE EVERYBODY IS SOMEBODY</i></p>		
<ul style="list-style-type: none"> Founded in 1901 Population: > 5000 (Graduate/Undergraduate) Degrees offered: Bachelor's Master's, Post-master's certificate, Doctoral Academic divisions: Business Administration and Management, Criminal Justice/Safety Studies, Psychology, Social Work, Biology and Biological Sciences 	<p>ADDRESS: 403 Main Street Grambling, Louisiana 71245</p> <p>WEBSITE: www.gram.edu</p>	<h3 style="margin: 0;">TIGERS</h3>
<p>INTERESTING FACT:</p> <p># 1 producer of African American Computer Science graduates</p>		<p>4 year, Public</p> <p>Band Tiger Marching Band</p> <p>Member of...</p> <p>Thurgood Marshall Scholarship Fund</p> <p>Southwestern Athletic Conference</p>



HBCUs in the the South Central Region

L
O
U
I
S
I
A
N
A

Southern University and A&M College

EXCELLENCE, PRIDE, TRADITION



- Founded in 1880
- Population: > 7200 (Graduate/ Undergraduate)
- Degrees offered: Bachelor's, Master's, Doctoral
- 6 academic divisions: Education, Business, Sciences and Engineering, Social and Behavioral Sciences, Sciences and Agriculture, Nursing and Allied Health

ADDRESS:
801 Harding Boulevard
Baton Rouge, Louisiana 70807

WEBSITE:
www.subr.edu

INTERESTING FACT:

The Southern University System is the only HBCU system in the world with five institutions - Southern University and A&M College, Southern University at New Orleans, Southern University at Shreveport, Southern University Law Center and Southern University Agriculture Research and Extension Center

Jaguars

4 year, Public

Band

The Human Jukebox

Member of...

Thurgood Marshall Scholarship Fund

Southwestern Athletic Conference

Southern University at New Orleans



- Founded in 1956
- Population: > 2500 (Graduate/ Undergraduate)
- Degrees offered: Associate's, Bachelor's, Master's
- 4 academic divisions: Arts & Sciences, Business and Public Administration, Education and Human Development, Social Work

ADDRESS:
6400 Press Drive
New Orleans, Louisiana 70126

WEBSITE:
www.suno.edu

INTERESTING FACT:

The Southern University System is the only HBCU system in the world with five institutions - Southern University and A&M College, Southern University at New Orleans, Southern University at Shreveport, Southern University Law Center and Southern University Agriculture Research and Extension Center

Knights & Lady Knights

4 year, Public

Member of...

Thurgood Marshall Scholarship Fund

National Association of Intercollegiate Athletics (NAIA)

Gulf Coast Athletic Conference



HBCUs in the the South Central Region

L
O
U
I
S
I
A
N
A

<h2>Southern University at Shreveport</h2> <p><i>OPPORTUNITY STARTS HERE</i></p>		
<ul style="list-style-type: none"> • Founded in 1967 • Population: > 3000 • Degree offered: Associate's • 7 academic divisions: Business, Humanities, Medical Assistant, Natural Sciences, Office Administration, Social Sciences, Medical Laboratory Technology 	<p>ADDRESS: 3050 Dr. Martin Luther King Drive Shreveport, Louisiana 71107</p> <p>WEBSITE: www.susla.edu</p>	<p>Jaguars</p> <p>2 year, Public</p> <p>Member of... National Junior College Athletic Association</p>
<p>INTERESTING FACT: The Southern University System is the only HBCU system in the world with five institutions - Southern University and A&M College, Southern University at New Orleans, Southern University at Shreveport, Southern University Law Center and Southern University Agriculture Research and Extension Center</p>		

<h2>Xavier University</h2> <p><i>WITH GOD'S HELP, THERE IS NOTHING TO FEAR</i></p>		
<ul style="list-style-type: none"> • Founded in 1925 • Population: > 3000 (Graduate/ Undergraduate) • Degrees offered: Bachelor's, Master's, Doctoral • 3 academic divisions: Biological and Public Health Sciences, Math and Physical Sciences, Business and Education and Counseling 	<p>ADDRESS: 1 Drexel Drive New Orleans, Louisiana 70125</p> <p>WEBSITE: www.xula.edu</p>	<p>Gold Rush</p> <p>4 year, Private</p> <p>Member of... National Association of Intercollegiate Athletics (NAIA) Gulf Coast Athletic Conference</p>
<p>INTERESTING FACT: The only Catholic HBCU in the United States</p>		



HBCUs in the the South Central Region

T

E

X

A

S

Huston-Tillotson University

IN UNION, STRENGTH



- Founded in 1875
- Population: > 900 (Graduate/ Undergraduate)
- Degrees offered: Bachelor's, Master's
- Academic divisions: Business, Education, Humanities, Natural Sciences, Social Sciences, Technology

ADDRESS:
900 Chicon Street
Austin, Texas 78702

WEBSITE:
www.htu.edu

INTERESTING FACT:
UAPB is a leading research institution in aquaculture studies

Rams

4 year, Private

Member of...

United Negro College Fund

National Association of Intercollegiate Athletics (NAIA)

Red River Athletic Conference

Jarvis Christian College

IMAGINING THE POSSIBILITIES



- Founded in 1912
- Population: > 800 Undergraduates
- Degrees offered: Associate's, Bachelor's
- Academic divisions: Arts and Sciences, Business, Criminal Justice, Education, Math, Music, Social Work

ADDRESS:
P.O. Box 1470
Hawkins, Texas 75765

WEBSITE:
www.jarvis.edu

INTERESTING FACT:
Jarvis Christian College was founded by the Disciples of Christ Church

4 year, Private

Band
Sophisticated Sounds of Soul (S3)

Member of...

National Association of Intercollegiate Athletics (NAIA)

Red River Athletic Conference



HBCUs in the the South Central Region

T

E

X

A

S

Paul Quinn College

WE OVER ME



- Founded in 1877
- Population: > 500 Undergraduates
- Degrees offered: Bachelor's
- Academic divisions: Biology, Business Administration, Health and Wellness, Legal Studies, Liberal Arts, Religious Studies

ADDRESS:
3837 Simpson Stuart Road
Dallas, Texas 75241

WEBSITE:
www.pqc.edu

INTERESTING FACT:

Paul Quinn is home to the "We over Me" Farm, created through a partnership with PepsiCo to bring health food to the food desert of Dallas

Tigers

4 year, Private

Member of...

National Association of Intercollegiate Athletics (NAIA)

Red River Athletic Conference

Prairie View A&M University

PRAIRIE VIEW PRODUCES PRODUCTIVE PEOPLE



- Founded in 1876
- Population: > 8000 (Graduate/ Undergraduate)
- Degrees offered: Bachelor's, Master's, Doctoral
- 8 academic divisions including— Agriculture & Human Sciences, Education, Engineering, Nursing, Architecture

ADDRESS:
700 University Drive
Prairie View, Texas 77446

WEBSITE:
www.pvamu.edu

INTERESTING FACT:

Ed Smart #1 " Top Historically Black Colleges on starting average salary and Texas schools with the highest starting salaries"

Panthers

4 year, Public

Band

The Marching Storm

Member of...

Thurgood Marshall Scholarship Fund

Southwestern Athletic Conference



HBCUs in the the South Central Region

T

E

X

A

S

St. Phillip's College



ALAMO
COLLEGES
DISTRICT

St. Philip's College

- Founded in 1898
- Population: > 11,000
- Degrees offered: Associate's
- Academic divisions: Arts and Sciences, Applied Science and Technology, Health Professions

1801 Martin Luther King Drive
San Antonio, Texas 78203

WEBSITE:
www.alamo.edu/spc

Tigers

2 year, Public

INTERESTING FACT:

St. Phillip's was founded to educate and train recently emancipated slaves and began as a weekend sewing class

Southwestern Christian College

BUILDING CHRISTIAN CHARACTER



- Founded in 1948
- Population: > 80 Undergraduates
- Degrees offered: Associate's, Bachelor's
- 2 academic divisions: Liberal Arts (Associate's), Bible and Religious Education (Bachelor's)

ADDRESS:
200 Bower Circle
Terrell, Texas 75160

WEBSITE:
www.swcc.edu

Rams

4 year, Private

Member of...
National Junior College
Athletic Association

INTERESTING FACT:

Southwestern Christian College was founded and sponsored by members of Churches of Christ



HBCUs in the the South Central Region

T

Texas College

GIVE THE PEOPLE LIGHT, AND THEY WILL FIND THEIR WAY



- Founded in 1894
- Population: > 900 Undergraduates
- Degrees offered: Associate's, Bachelor's
- Academic divisions: Early Childhood Education and General Studies, Business and Social Sciences, General Studies and Humanities, Education, Natural and Computational Science

ADDRESS:
2404 North Grand Avenue
Tyler, Texas 75702

WEBSITE:
www.texascollege.edu

INTERESTING FACT:
Texas College was founded by a group of Christian Methodist Episcopal (CME) Church ministers

Steers

4 year, Private

Member of...
United Negro College Fund
National Association of Intercollegiate Athletics (NAIA)
Red River Athletic Conference

E

X

Texas Southern University

EXCELLENCE IN ACHIEVEMENT



- Founded in 1927
- Population: > 10,000 (Graduate/ Undergraduate)
- Degrees offered: Bachelor's, Master's, Doctoral
- 12 academic divisions—including Barbara Jordan-Mickey Leland School of Public Affairs, Pharmacy & Health Sciences, Thurgood Marshall School of Law

ADDRESS:
3100 Cleburne Street
Houston, Texas 77004

WEBSITE:
www.tsu.edu

INTERESTING FACT:
TSU students organized Houston's first sit-in at the Weingarten's lunch counter in 1960 which inspired sit-ins across the city leading to desegregation of many of Houston's public establishments...today, a historical marker stands to commemorate the courageous acts of those students

Tigers

4 year, Public

Band
Ocean of Soul Marching Band

Member of...
Thurgood Marshall Scholarship Fund
Southwestern Athletic Conference

A

S



HBCUs in the the South Central Region

**T
E
X
A
S**

Wiley College

GO FORTH INSPIRED



- Founded in 1873
- Population: > 1400 Undergraduates
- Degree offered: Bachelor's
- 4 academic divisions: Education, Social Sciences and Humanities, Business & Technology, Sciences

ADDRESS:
711 Wiley Avenue
Marshall, Texas 75670

WEBSITE:
www.wileyc.edu

Wildcats

4 year, Private

Member of...

United Negro College Fund

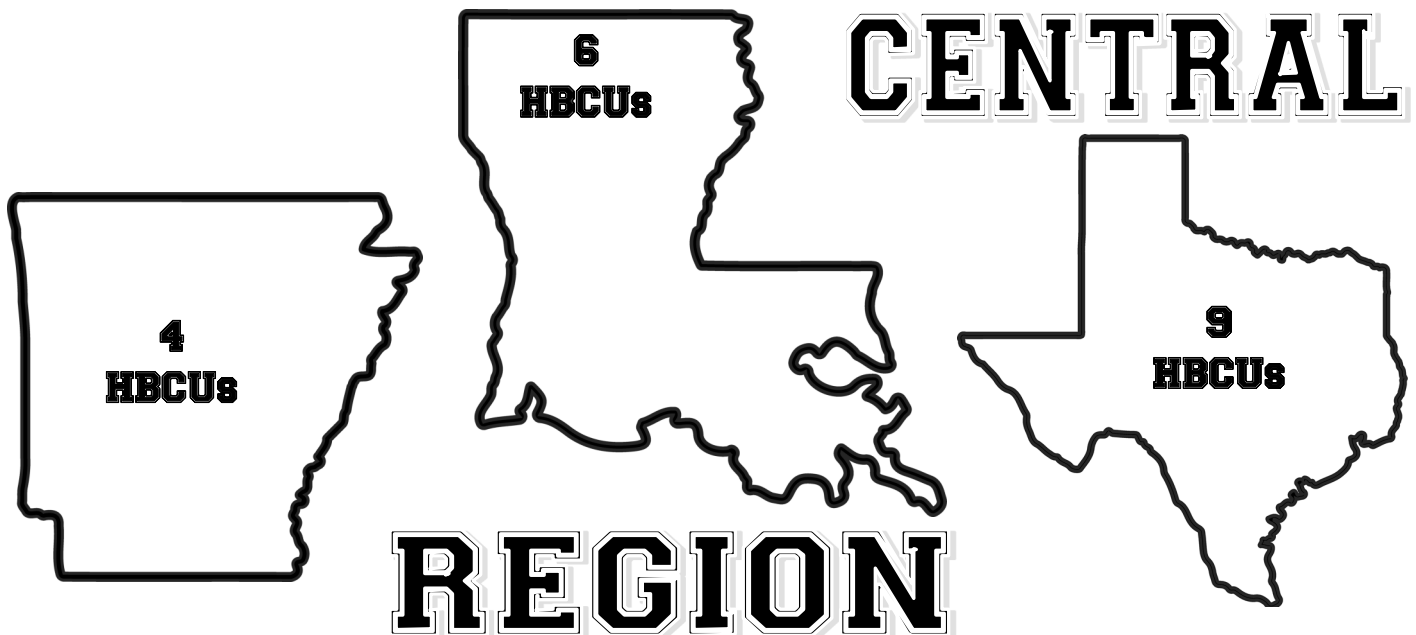
National Association of Intercollegiate Athletics (NAIA)

INTERESTING FACT:

The success of the 1935 Wiley College debate team was the subject of a documentary in 2005 and a movie in 2007 titled, "The Great Debaters," directed by and starring Denzel Washington

SOUTH

CENTRAL



REGION



HBCUs across the Country

A

[Alabama A&M University](#)

[Alabama State University](#)

[Albany State University](#)

[Alcorn State University](#)

[Allen University](#)

[American Baptist College](#)

[Arkansas Baptist College](#)

B

[Barber-Scotia College](#)

[Benedict College](#)

[Bennett College](#)

[Bethune-Cookman University](#)

[Bishop State Community College](#)

[Bluefield State College](#)

[Bowie State University](#)

C

[Carver College](#)

[Central State University](#)

[Charles Drew University of Medicine and Science](#)

[Cheyney University of Pennsylvania](#)

[Claflin University](#)

[Clark Atlanta University](#)

[Clinton Junior College](#)

[Coahoma Community College](#)

[Coppin State University](#)

D

[Delaware State University](#)

[Denmark Technical College](#)

[Dillard University](#)

E

[Edward Waters College](#)

[Elizabeth City State University](#)



HBCUs across the Country

F

[Fayetteville State University](#)

[Fisk University](#)

[Florida A&M University](#)

[Florida A&M University College of Law](#)

[Florida Memorial University](#)

[Fort Valley State University](#)

G

[Gadsden State Community College](#)

[Grambling State University](#)

H

[Hampton University](#)

[Harris-Stowe State University](#)

[Hinds Community College-Utica](#)

[Hood Theological Seminary](#)

[Howard University](#)

[Howard University College of Medicine](#)

[Howard University School of Law](#)

[Huston-Tillotson University](#)

I

[Interdenominational Theological Center](#)

J

[J.F. Drake State Technical College](#)

[Jackson State University](#)

[Jarvis Christian College](#)

[Johnson C. Smith University](#)

[Johnson C. Smith Theological Seminary](#)

K

[Kentucky State University](#)

[Knoxville College](#)

L

[Lane College](#)

[Langston University](#)

[Lawson State Community College](#)

[LeMoyne-Owen College](#)

[Lincoln University](#)

[Lincoln University of Missouri](#)

[Livingstone College](#)



HBCUs across the Country

M

[Meharry Medical College](#)

[Miles College](#)

[Mississippi Valley State University](#)

[Morehouse College](#)

[Morehouse School of Medicine](#)

[Morgan State University](#)

[Morris Brown College](#)

[Morris College](#)

N

[Norfolk State University](#)

[North Carolina A&T State University](#)

[North Carolina Central University](#)

O

[Oakwood University](#)

P

[Paine College](#)

[Paul Quinn College](#)

[Philander Smith College](#)

[Prairie View A&M University](#)

R

[Rust College](#)

S

[Savannah State University](#)

[Selma University](#)

[Shaw University](#)

[Shelton State Community College](#)

[Shorter College](#)

[Simmons College of Kentucky](#)

[South Carolina State University](#)

[Southern University and A&M College](#)

[Southern University at New Orleans](#)

[Southern University Law Center](#)

[Southwestern Christian College](#)

[Spelman College](#)



HBCUs across the Country

S

[St. Augustine's College](#)

[Stillman College](#)

[St. Philip's College](#)

T

[Talladega College](#)

[Tennessee State University](#)

[Texas College](#)

[Texas Southern University](#)

[Texas Southern University – Thur-
good Marshall School of Law](#)

[Tougaloo College](#)

[Tuskegee University](#)

U

[University of Arkansas at Pine Bluff](#)

[University of the District of Columbia](#)

[University of Maryland, Eastern
Shore](#)

[University of the Virgin Islands](#)

V

[Virginia State University](#)

[Virginia Union University](#)

[Virginia University of Lynchburg](#)

[Voorhees College](#)

W

[Wilberforce University](#)

[Wiley College](#)

[Winston-Salem State University](#)

[West Virginia State University](#)

X

[Xavier University of Louisiana](#)



Helpful College Links

collegeforalltexas.com

<https://www.collegeplanningexperts.com/helpful-links>

<http://hbculibraries.org/>

<https://collegeadmissionsstrategies.com/lee-bierer/helpful-info/>

<https://www.unigo.com/scholarships/minority/african-american-scholarships>

<https://hbcuconnect.com/>

<http://scholaready.com/>

<https://collegeplanninghelp.com/useful-links/>

<https://www.blackpast.org/black-past-features/historically-black-colleges-and-universities/>

<https://hbculifestyle.com/101-minority-scholarships/>

<https://www.scholarships.com/financial-aid/college-scholarships/scholarship-directory/race/african-american>

<https://www.fastweb.com/college-scholarships/articles/scholarships-for-african-american-students>

<https://thehbcufoundation.org/>

<https://www.collegeconsensus.com/rankings/best-hbcu/>

<https://thehbcumuseum.com/>

<https://hbcufirst.com/why-choose-an-hbcu>

<https://thehbcucareercenter.com/>

<http://www.thehundred-seven.org/matchme.php>

<https://www.bestvalueschools.com/rankings/hbcu-grad-schools/>

<https://www.niche.com/colleges/search/best-hbcu-schools/>

<https://hbcubuzz.com/2020/03/top-graduate-schools-for-hbcus/>

<https://collegesofdistinction.com/advice/college-move-in-day-a-college-packing-list-of-essentials-for-your-dorm-room/>

<https://commonblackcollegeapp.com/>



HBCU for Life Resource Guide Committee

HBCU for Life College Resource Guide Subcommittee

Patricia Arbuckle

Mary Boone

Michelle Calhoun

Ebony Campbell

Lindsay Campbell

Yolanda Gautier

Stacey Hennings

Equilla Jackson

Cheryl Jones

Andrea King

Chasney McCoy

Renee Miller

Bianca Murrell

Shelley Price

Wendy Reece

Brigid Roberson

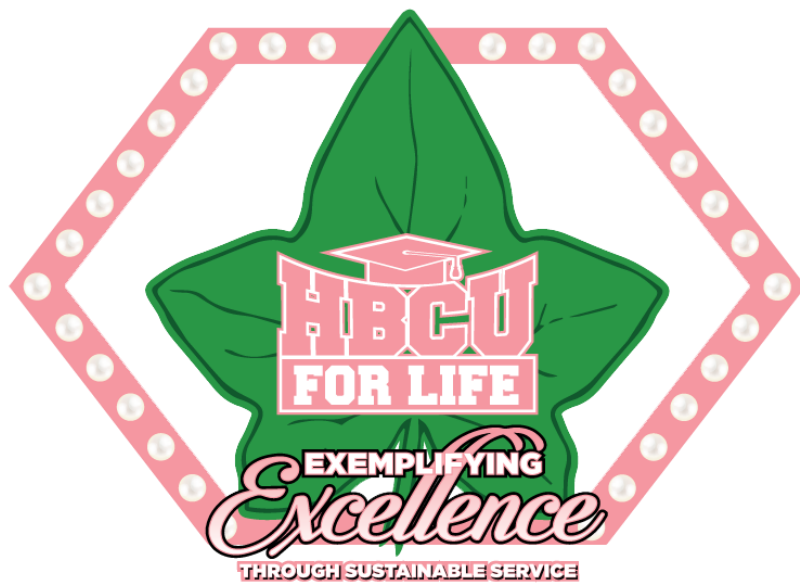
Jennifer Williams

Monica Robinson Green

1st Vice President/Program Chairman, Mu Kappa Omega Chapter

Jessica Hill

President, Mu Kappa Omega Chapter



SEPTEMBER 2020